

Customer :

customer

Customer part :

customer part

Comment :

Comment

S1=1.35

S2=1.9

Tmax=448

Tp S2=487.0

PI=0.42

HI=117

Sample =1654.60

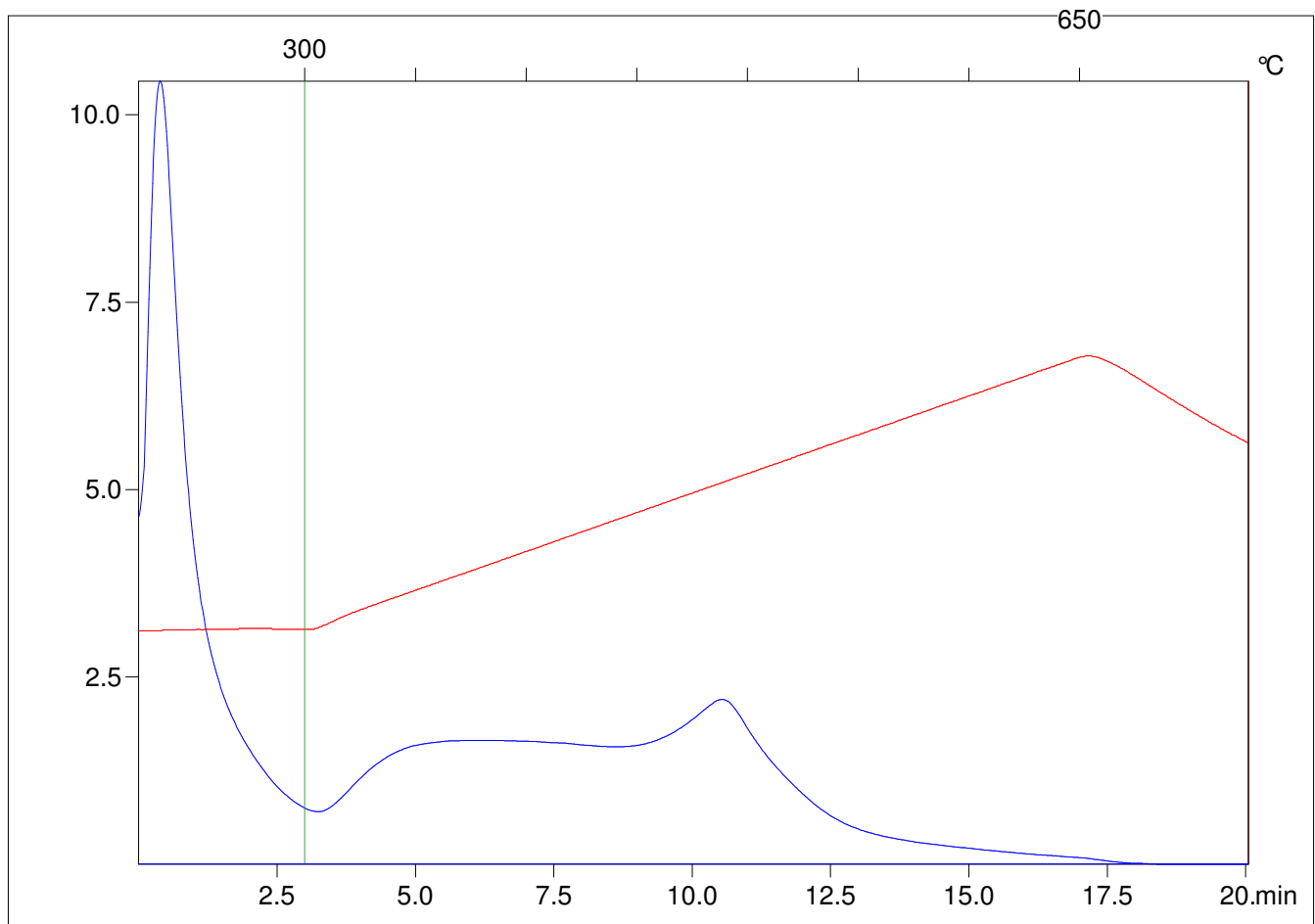
Method =Bulk Rock

Cycle=Basic

KFID(10*9)=1444

Qty =70.5

TOC=1.63



C:\VINC\PK1792\PK075.R00 : FID pyrolysis graphic

State

Pyro Status

Oxi Status